

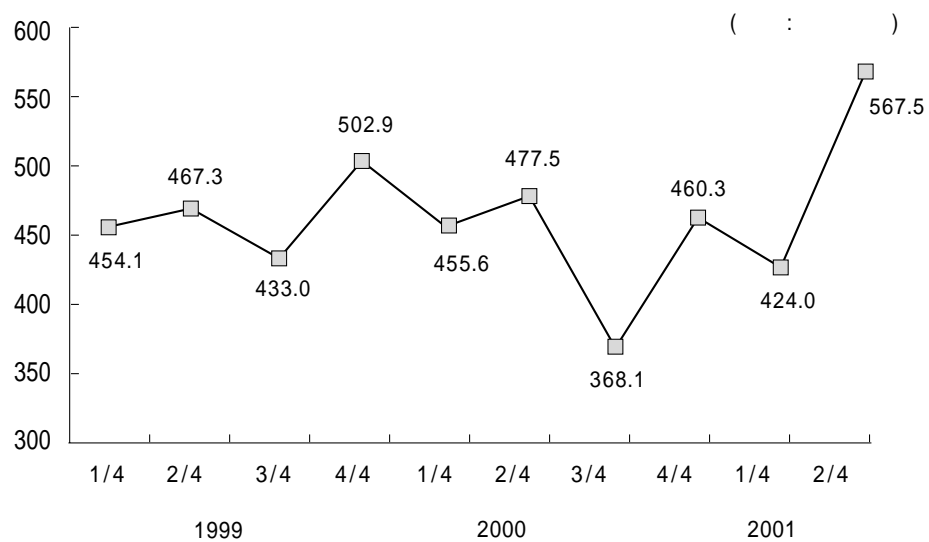
1.

(1)

2/4	가	,
	가	

— 2/4 ,
 2001 6.3% 가 .
 (13.6) (22.9) 가 ,
 (13.3), (1.1) 가 .

— 14.3%
 9.4% .



:
 :

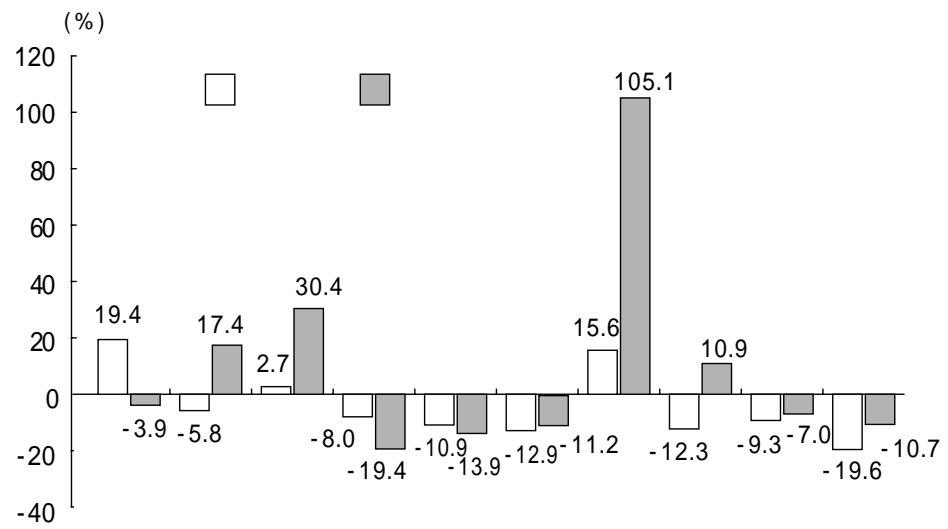
2001

(: %)

6.3								
	13.6	8.8	10.2	22.9	21.5	17.7	7.3	13.3
	1.1	-3.0	-4.0	-3.8	-9.7	-6.5	-0.5	-12.7

:
 :

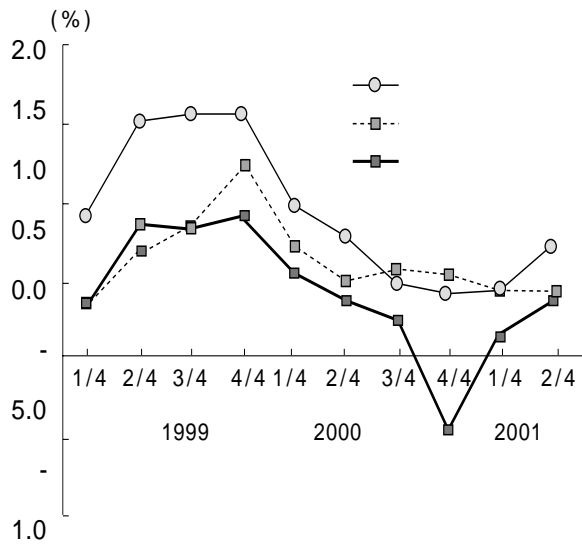
2001



:
 :

가

가



(: %)

	2000					2001	
	1/4	2/4	3/4	4/4		1/4	2/4
	0.53	0.37	0.23	-0.46	0.67	0.14	0.36
	0.37	0.26	0.16	-0.76	0.03	0.07	0.3
	0.36	0.27	0.12	-1.01	-0.26	-0.03	0.2
	0.47	0.41	0.20	-0.65	0.43	0.05	0.2
	0.97	0.77	0.48	0.40	2.65	0.43	0.7
	1.01	0.62	0.40	0.30	2.34	0.26	0.3
	0.88	0.55	0.50	0.65	2.60	0.38	0.4
	1.02	0.23	0.29	0.33	1.88	0.37	0.47
	0.71	0.49	0.56	0.52	2.30	0.43	0.42

– 1998 4/4

, 2/4

가 2001 1/4 0.14%

0.36%

가

가 (0.2%)

0.7% 가

가 ‘ 7

()’

가

(2)

가

.

— , 가 ,

— , 5 가 .
가,

— , 가 .

— , 가 가 가 .

2. 2002

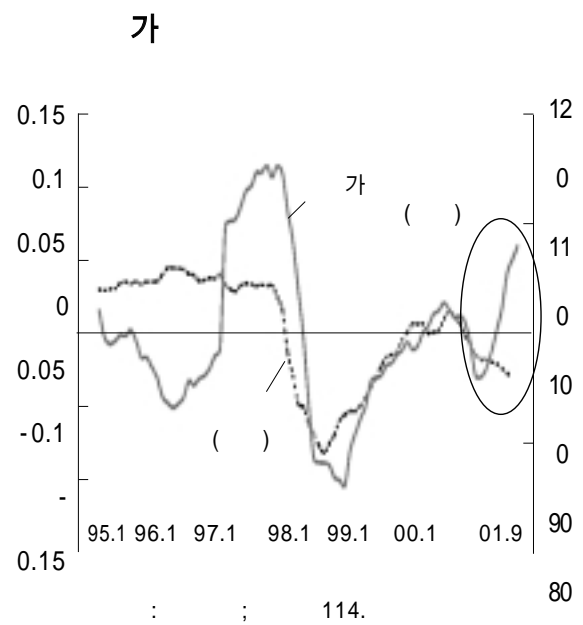
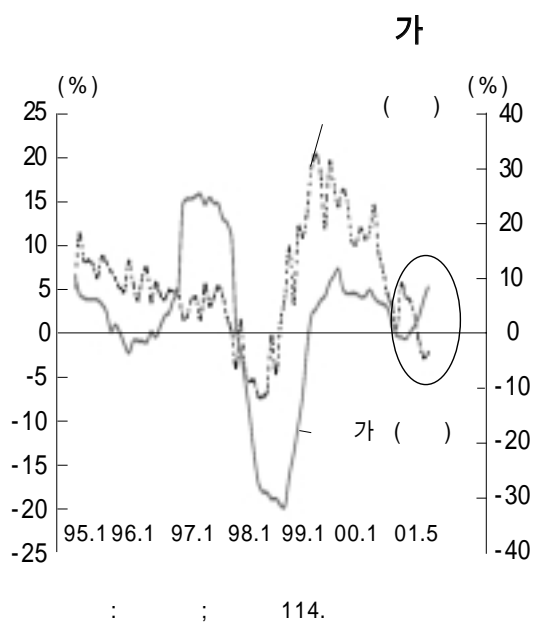
(1) 2001

1)

가 가 .
 , 20 가 가 ,
 가 가 .

가.

가



—

가

가 5

.

2000 11

가

6

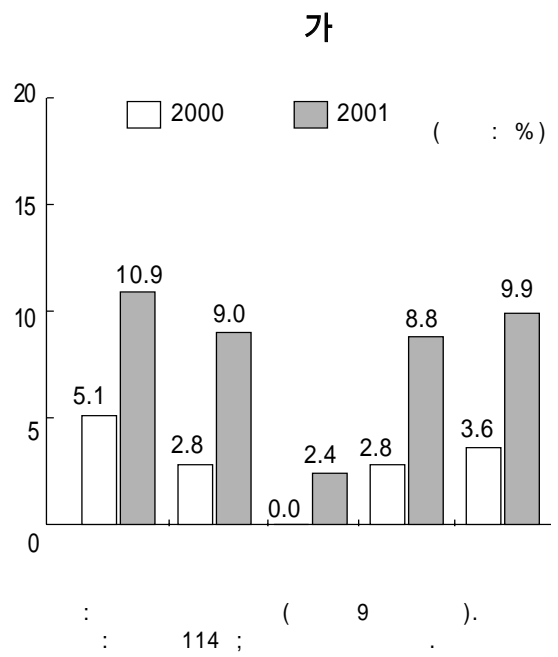
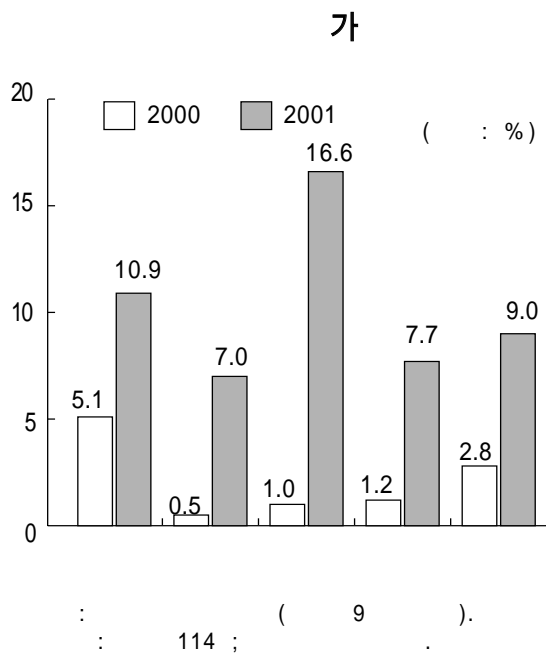
.

가

가

가 5

.



가 5 .

가 9.9% ,

가 2.8 .

가 9 11%

가 2 가

가 2.4%

가 가 ,

가 1% 9

16.6% 가 가 .

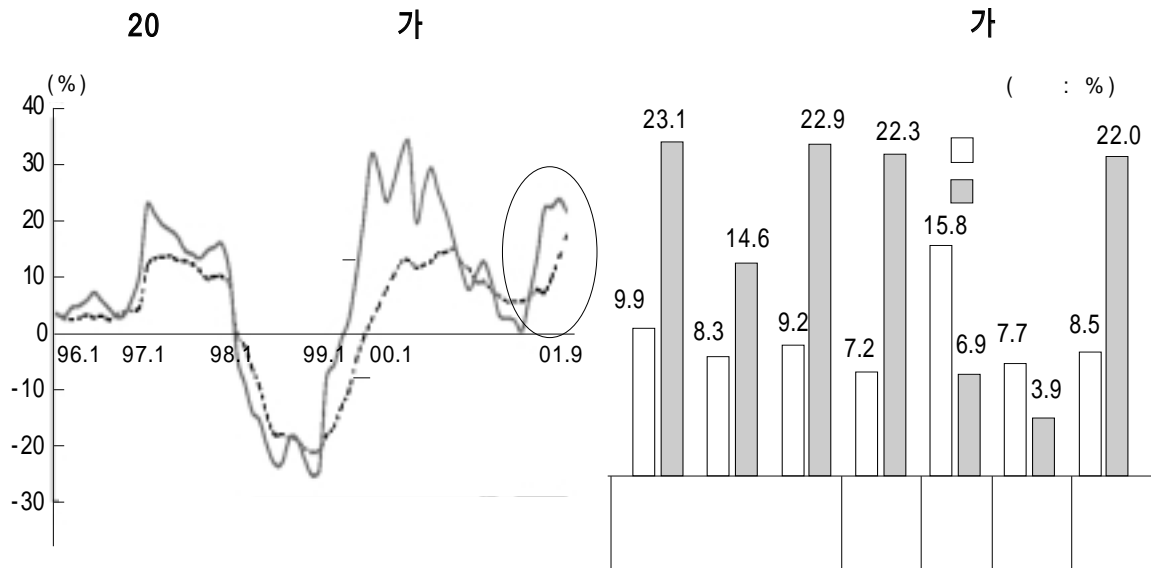
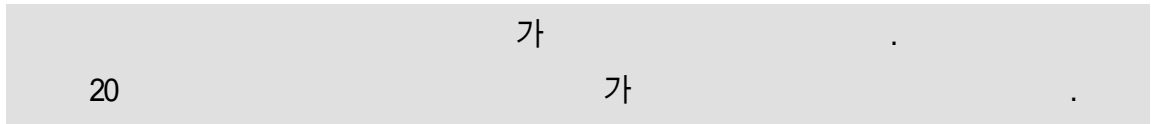
가 10.9% ,

가 9 7.0% 가

7.7% .

가 2.8% 9.0%

가



: 114 ;

: 114 ;

— 114 가 가 421 7,640 가

17 497 (4%) 가

가 2.5 .

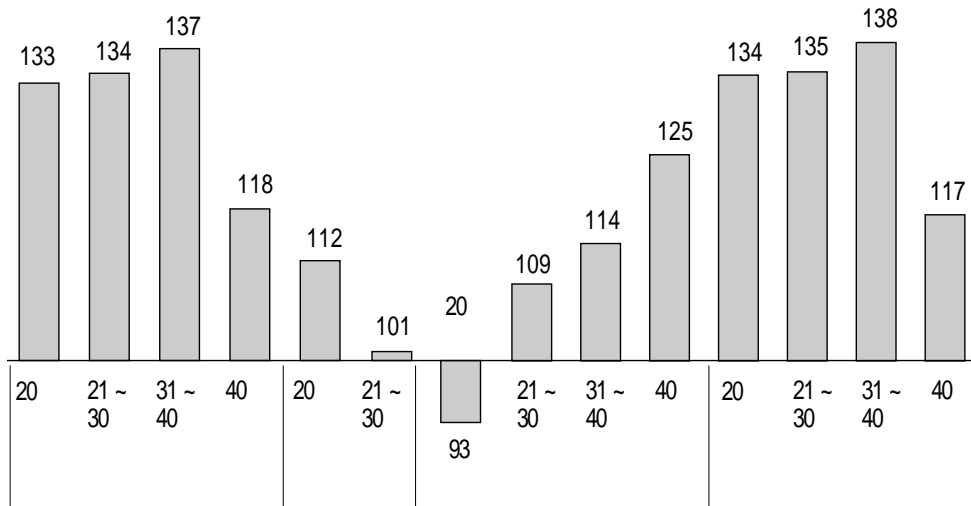
· 20 가 9 28.3 %

가 20%

— 가 가 가 가

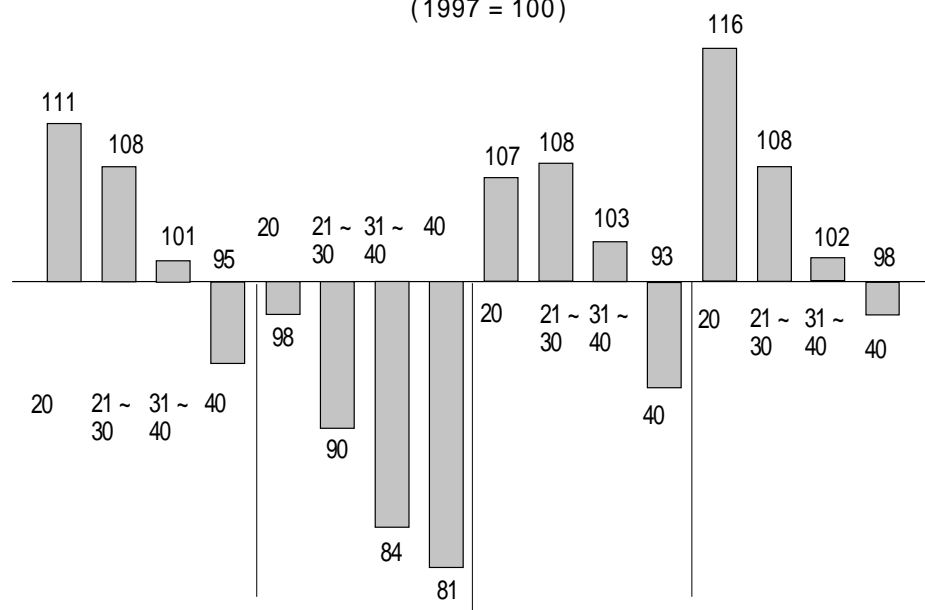
41 30%

가
(1997 = 100)



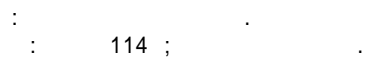
: 114 ; .

가
(1997 = 100)



: 114 ; .

가 30 가 20 가 20 가 20% 가 17.6 % 가 .



가

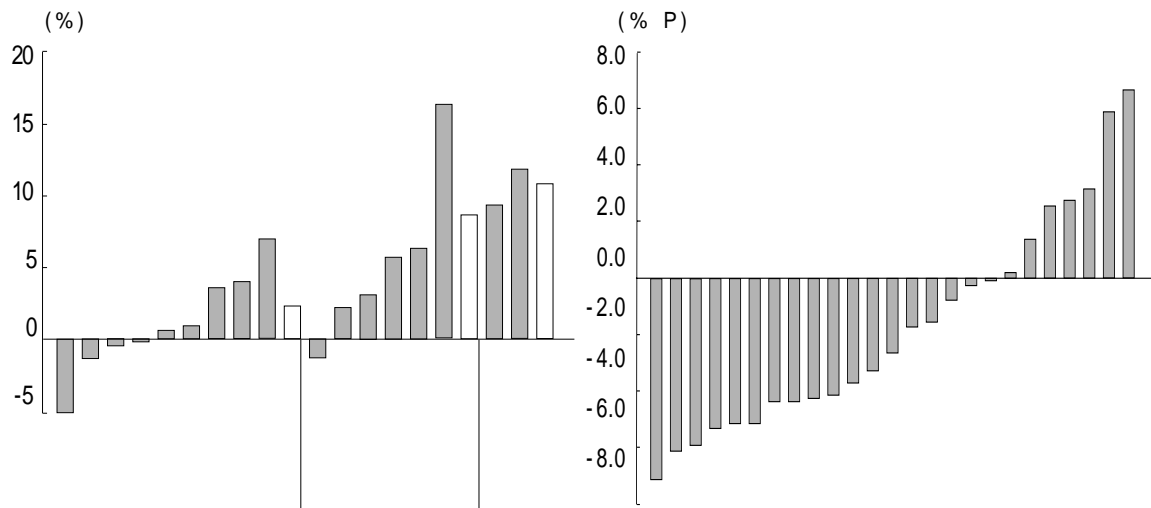
(: %)

20	23.4	16.2	20.5	18.9	18.3	6.8	14.8	17.6
21 30	13.9	9.2	17.8	13.5	11.7	2.7	10.0	11.5
31 40	10.3	5.5	17.8	7.1	8.6	1.9	9.1	9.6
41	3.5	-0.4	7.7	2.1	0.6	-0.9	3.7	3.1
	10.9	7.0	16.6	7.7	9.0	2.4	8.8	9.9

:
: 114 ;

가	가	
	가	가

가



: 2001 9
: 114 ;

: 2001 9
: 114 ;

— 가

가

가

가 5%

가

가

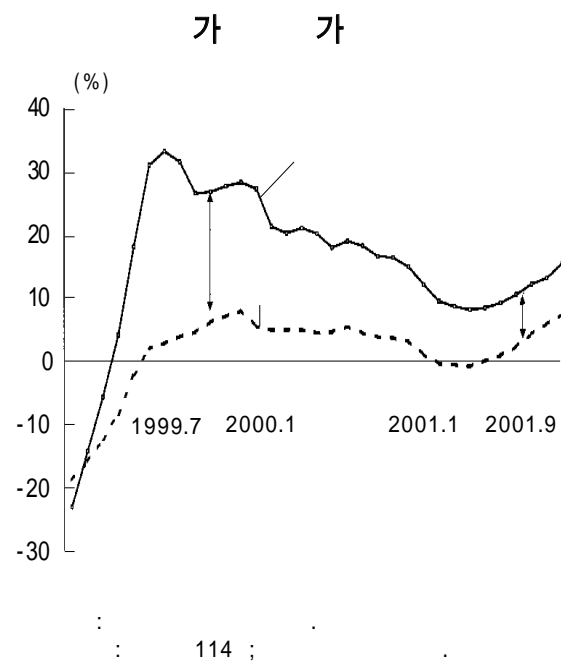
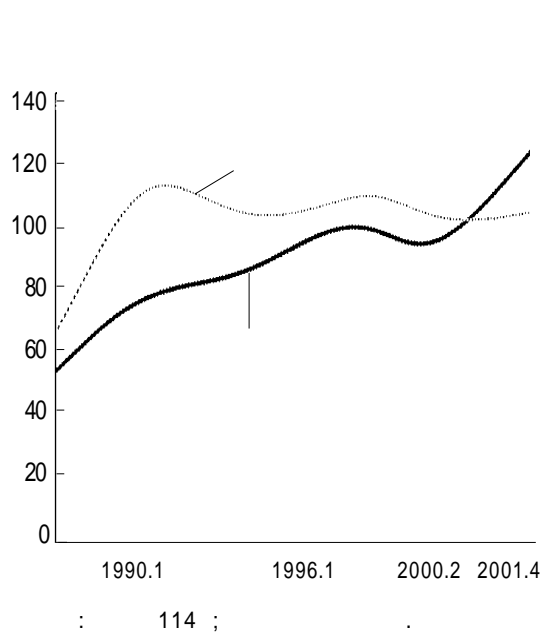
가 6%

25

2)

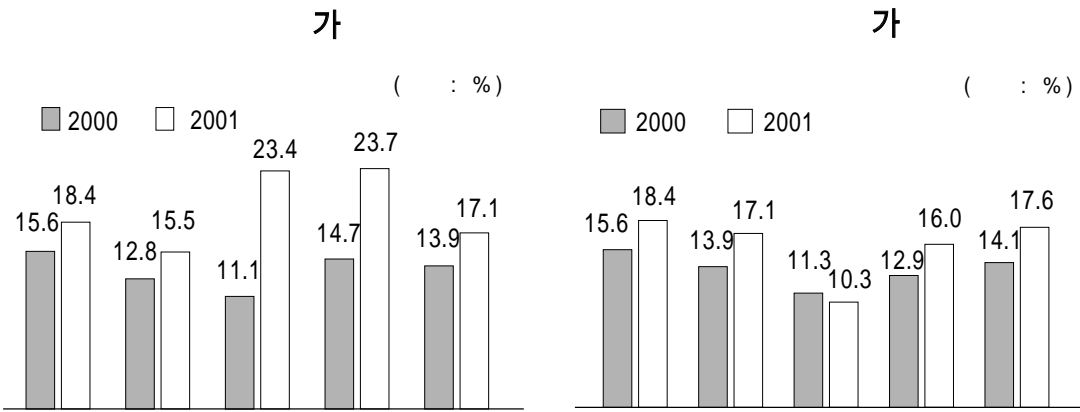
가 , 가 가
가 .

가. 가



- 가 가 2000 가
가 가
.
- 가 가 가
.
- 가 가
.

가	9	17.6%	.
23%	.	가	.



: (9).
: 114 ; .

: (9).
: 114 ; .

- 가

- 가

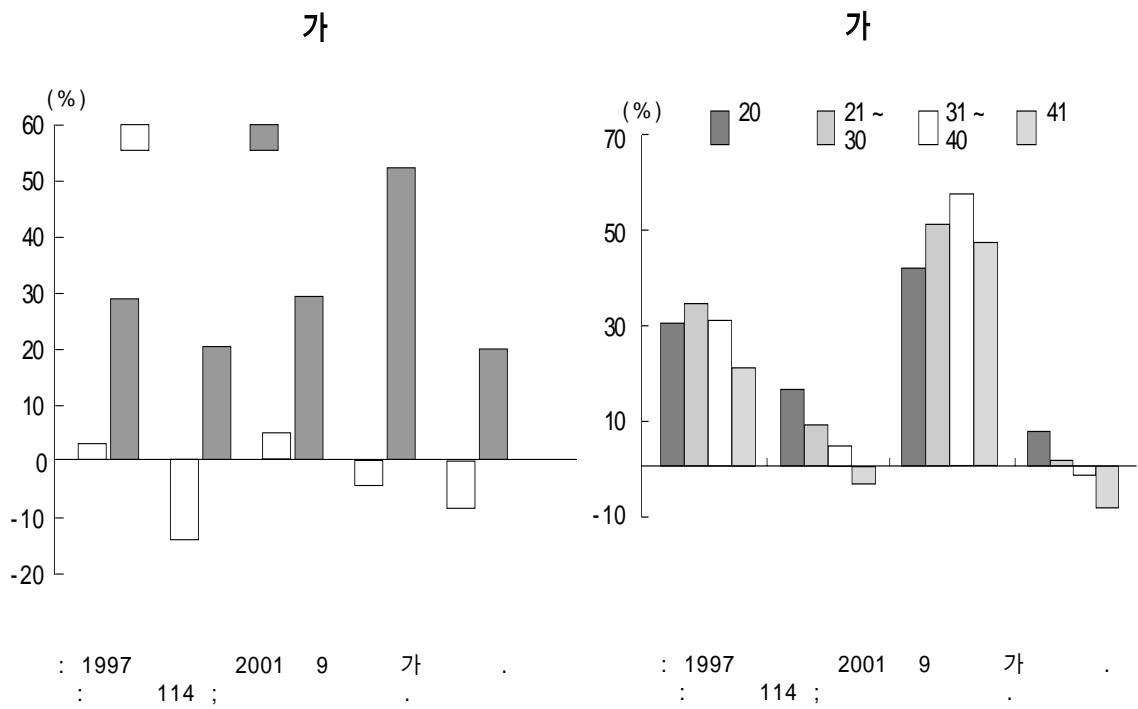
- 가 가

가 (2001 9)						(: %)		
20	21.4	16.8	21.4	23.0	18.1	7.9	13.5	16.5
21 30	21.2	16.9	23.0	25.1	19.2	9.3	16.7	18.7
31 40	19.1	17.3	25.8	25.6	18.6	12.4	17.5	19.2
41	12.2	9.4	20.8	20.2	9.6	9.0	12.7	12.1
	18.4	15.5	23.4	23.7	17.1	10.3	16.0	17.6

:
: 114 ; .

가 95% 50% ,

가 5% , 가 30% 가



가 20 가 60% 가 80% . ,

— 가 .
 . 가 가 .
 가 , 가 .

(: %)

			가		가			
	1989.1	1991.6	2.72	2.89	1.54	2.50	38.28	4.39
	1991.7	1994.1	-0.84	1.53	0.08	0.65	38.78	3.16
	1994.2	1997.11	0.45	1.39	0.66	1.24	46.72	2.40
	1997.12	1998.12	-1.77	1.57	-2.08	4.01	42.55	2.50
	1999.1	2001.9	0.47	0.88	1.51	1.33	53.67	4.56

• 29

－ 가 가, 가,

·

· 가 가 가

· 가 가 가

· 1991 1 2001 9 가

1990 0.47 % 가

1.51 % 가 3 가

·

가

(: %)

20	71.59	67.00	67.33	77.55	68.60	65.54	67.97	66.96
21 30	69.55	70.73	70.95	75.20	70.24	68.94	70.50	70.11
31 40	62.74	64.36	67.39	67.70	63.82	64.62	65.25	64.63
41	53.42	51.68	57.68	54.10	52.95	52.89	55.58	53.90
	62.09	63.63	67.47	65.65	63.22	63.80	64.47	63.80

：

： 114 ；

－ 30 가 67 70% 가 , 41

54% . 30% 가 .

· 가 , .

· 가 , 20 77.6 % , 21

30 75.2 % .

가 , 가
30 40%,
40%

가
1.56 2.25% 가

(2001 9)

(: %)

	4.38	4.71	4.64	4.55
	5.94	6.96	6.89	6.45
	1.56	2.25	2.25	1.90

: 114.

2001 9 30.4%
32.9%, 가 30.1% , 48.4%
20 46.5%,
56.5% 가

(2001 9)

(: %)

		20	21 30	31 40	41
	32.9	46.5	28.8	25.4	15.7
	30.4	38.9	28.9	27.0	23.2
	30.1	28.7	31.3	30.9	28.5
	48.4	56.5	58.3	39.4	36.4

: 114.

— 2000 10
1/3 8 가 46.4 % 가

()

(: %)

2000. 10	66.3	29.7	4.0
2001. 2	67.2	27.1	5.7
2001. 5	55.1	41.8	3.1
2001. 8	53.6	42.7	3.7

: (2001), 「 」.

— 2
3 .

. 2 20% .
40 46% .
. 15 20% .

(: , %)

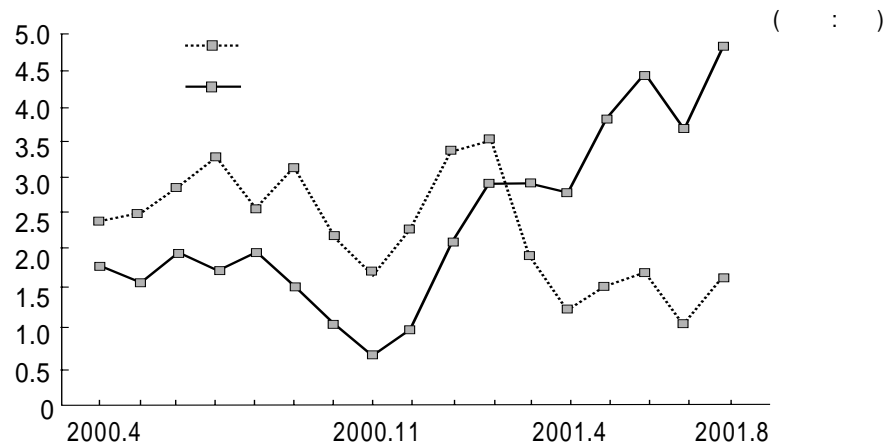
	3,770	58	41.9	1.50
	4,755	62	46.5	1.65
	4,741	61	46.4	1.65

: 1) = { / (-) } 100
2) , ,
: 114

3) 가

가 .
 , 가 .
 , 가 . 6

2000 2
 가 1/2 .
 2000 2 2001
 3 6 4 가 (6 4.1 , 7 3.5
 , 8 4.5).
 2.5 3 3
 1.2 1.8 (6 1.8 , 7 1.2 , 8 1.8).
 3 6 7
 , 4 5 2 3 .



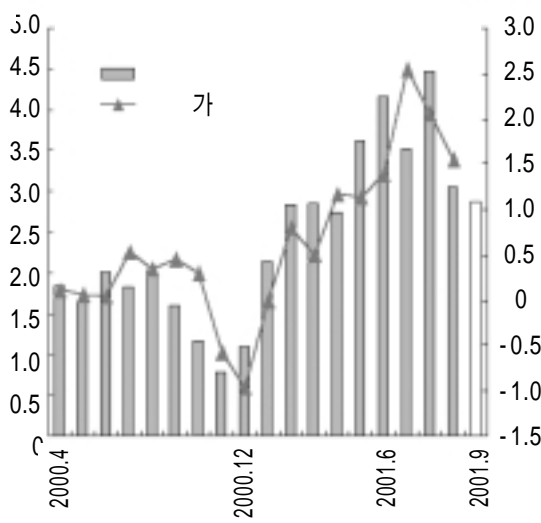
: 114.

가
 (-) 가 1
 3 4

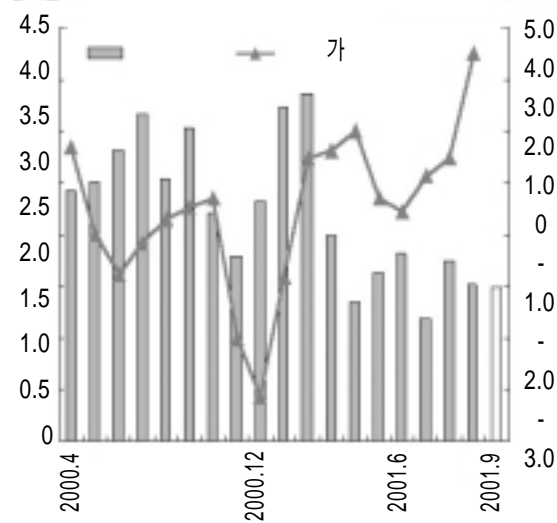
가 , 7
 가 8 가 . 4
 가 가 35
 가

가

가



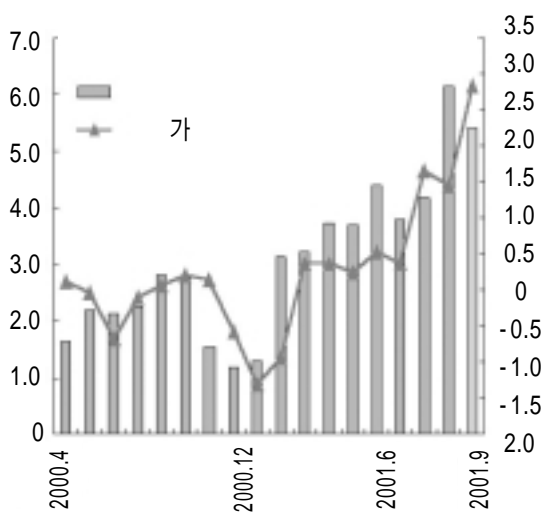
: 114.



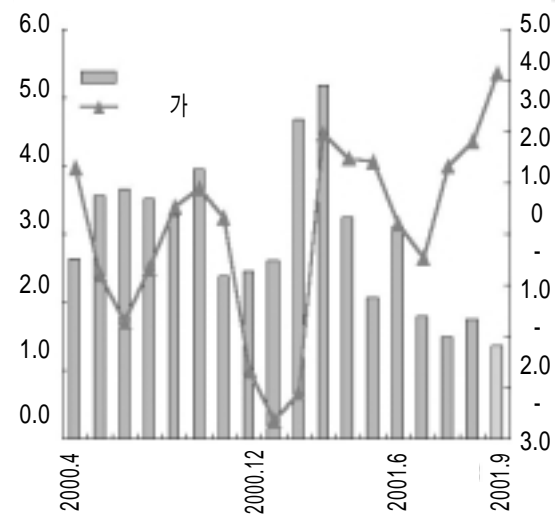
: 114.

가

가



: 114.



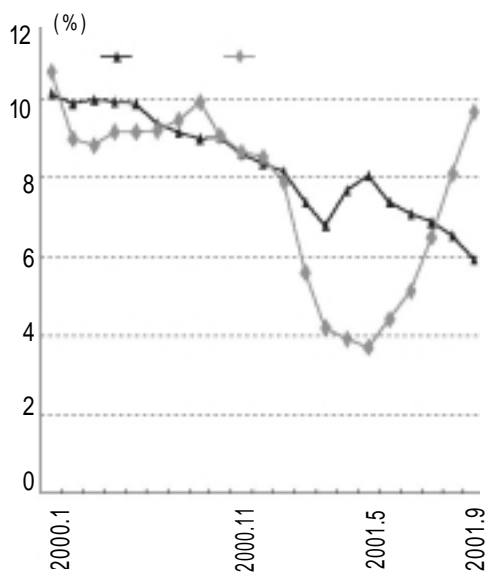
: 114.

가 8
7
9

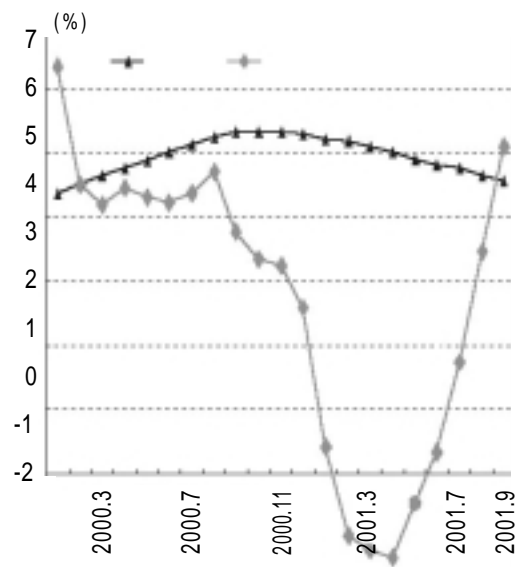
가 9
가가
가가

4)

가 5 가
가 20%



: 114.



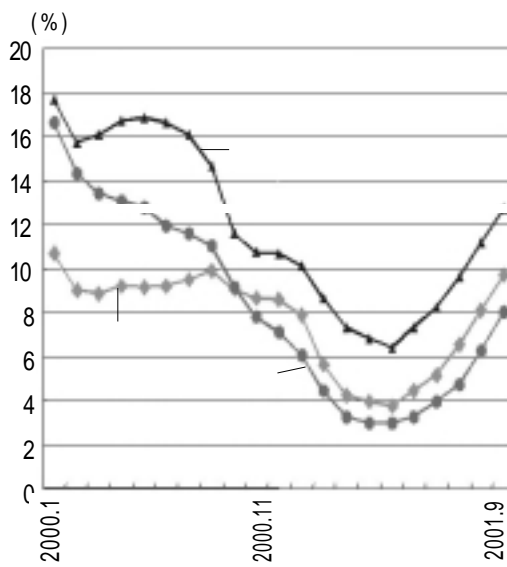
: 114.

가 가

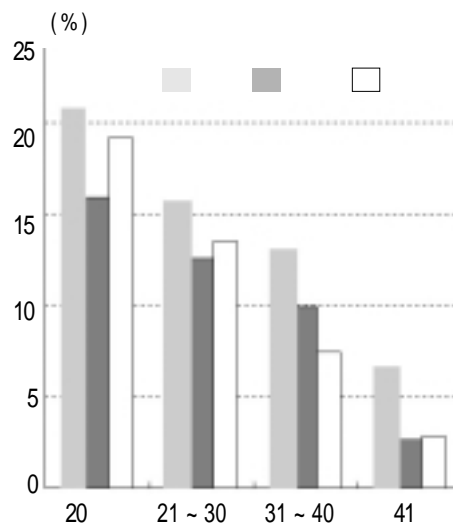
가 가 가

가

4% 5.3% 가 4.5%



: 114.



: 114.

가

가

10% 5 가

, 12.7%

가

가

4.7%

20 가

3%

· 20 20.8 %, 20
19.2 % ·

—

6 가 · 가
가 가 .

(2) 2002

1) 가

, 가 , , 가
가 가 . 가
.

- (VAR) , 가 가
가 가 .

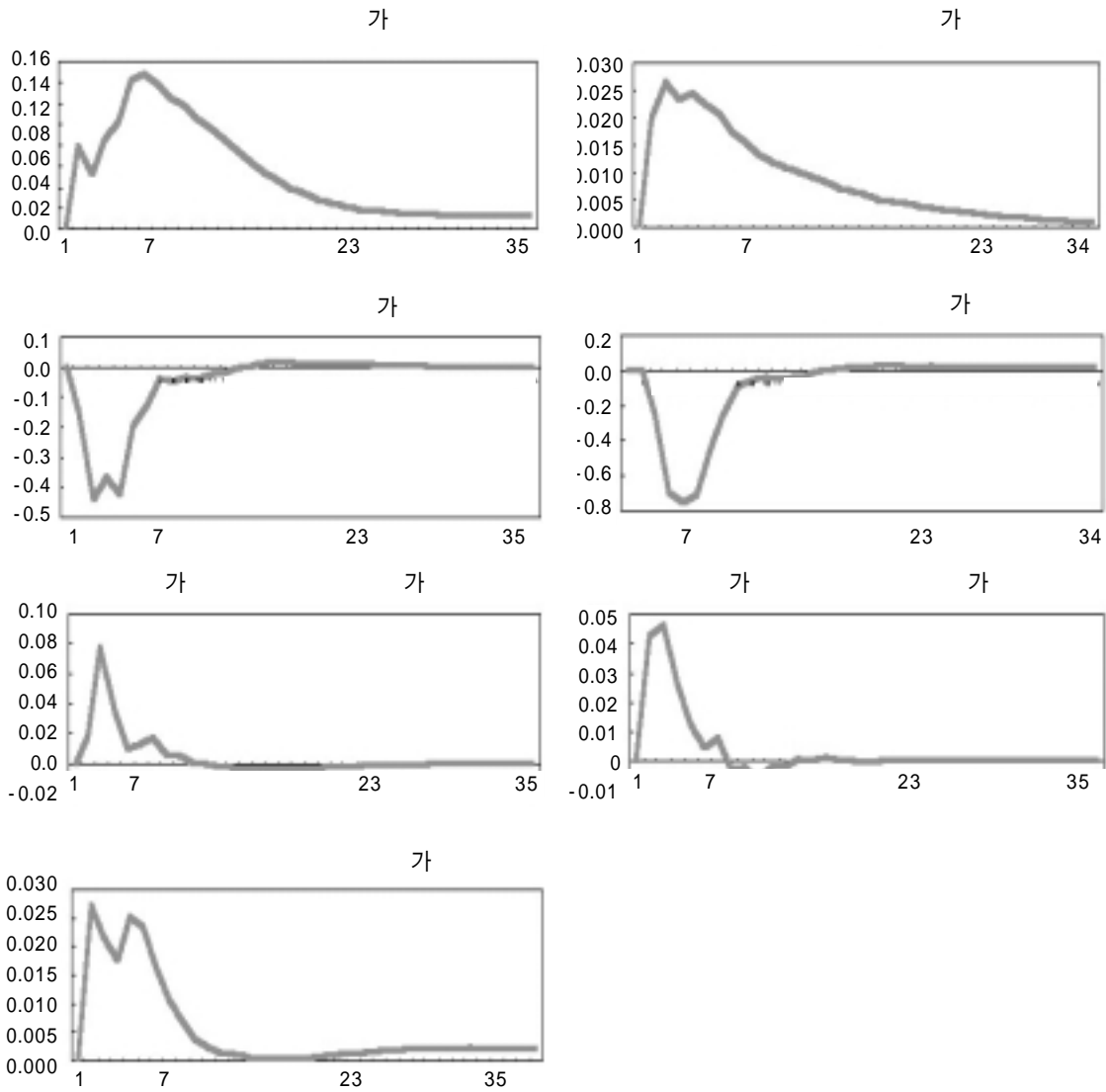
- 가 , 가 ,
가 .
가 .

- 가 ,
가 , 가
가 , 가
가 가
.

- 가 가
가 가
.

- 가 가
,
가 가 가
.

가



: 1) 가 가 , , 가 1% .
 2) 가 가 , 5 , 1%

2)

가	가
가	가
가	가

(: %)

				가	가		
5		89.7 92.1	0.90	2.53	1.67	39.41	16.39
		92.1 93.1	0.12	-0.53	0.25	36.17	17.14
6		93.1 96.3	1.04	-0.11	0.40	43.91	12.97
		96.3 98.8	-0.06	-0.14	-0.78	46.62	14.01
7		98.8 00.8	2.13	0.30	1.80	49.56	9.32
		00.8	-0.37	0.43	0.98	58.18	7.66

— 가

, 가

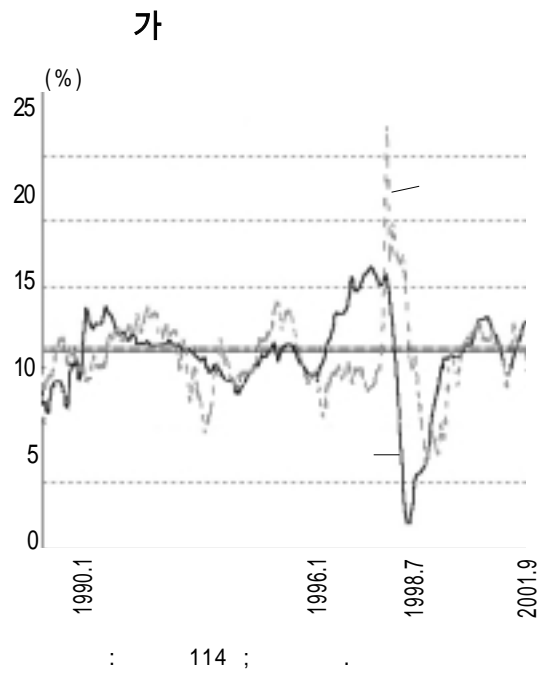
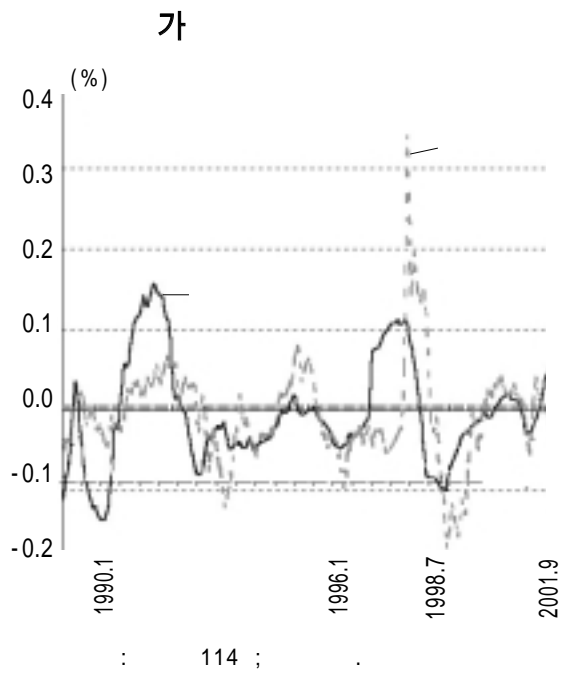
— 2000 8 가 가 가

. 가 1992 1 1993 1 1996 3
1998 8 0.53 % 0.14 % , 2000 8
1998 8 2000 8

. 가
가 0.98 %

—

- 가



- 60% , 80%

		18	18-25.7	25.7		18	18-25.7	25.7		18	18-25.7	25.7
1997	596,435 (100)	258,972 (43.4)	224,052 (37.5)	113,411 (19.0)	229,370 (100)	79,289 (34.6)	93,848 (40.9)	56,233 (24.5)	70,446 (100)	22,543 (32.0)	28,883 (41.0)	19,020 (27.0)
1998	306,031 (100)	139,793 (45.7)	106,891 (34.9)	59,347 (19.4)	148,669 (100)	51,434 (34.6)	57,470 (38.7)	39,765 (26.7)	28,994 (100)	9,278 (32.0)	11,888 (41.0)	7,828 (27.0)
1999	404,715 (100)	139,666 (34.5)	150,829 (37.3)	114,220 (28.2)	237,454 (100)	53,915 (22.7)	92,542 (39.0)	90,997 (38.3)	61,460 (100)	12,210 (19.9)	24,205 (39.4)	25,045 (40.7)
2000	433,488 (100)	131,936 (30.4)	207,570 (47.9)	93,982 (21.7)	240,985 (100)	70,449 (29.2)	111,791 (46.4)	58,745 (24.4)	96,936 (100)	23,469 (24.2)	41,041 (42.3)	32,426 (33.5)
2001	272,981 (100)	107,807 (39.5)	119,172 (43.7)	46,002 (16.9)	158,732 (100)	67,465 (42.5)	67,011 (42.2)	24,256 (15.3)	57,085 (100)	17,510 (30.7)	28,356 (49.6)	11,219 (19.7)

42 · 2002

·
· () 2003 가
·

(: , %)

		2000	2001	2002	2003
가		74,616 (100)	55,531 (100)	41,899 (100)	53,463 (100)
	(13)	42,057 (56.4)	30,185 (54.4)	19,850 (47.4)	26,452 (49.5)
	(11)	32,559 (43.6)	25,346 (45.6)	22,049 (52.6)	27,178 (50.8)

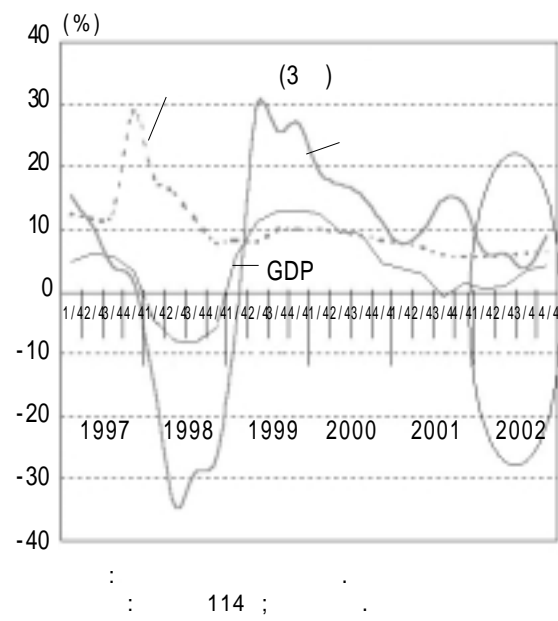
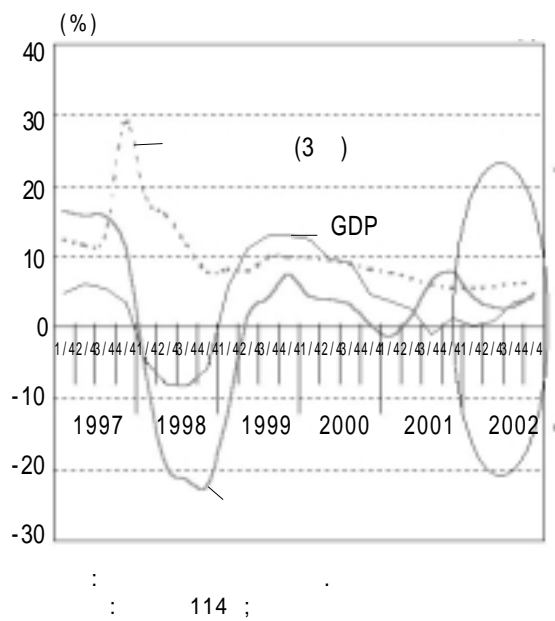
: 1) 2000

2) 2001

: 114 ;

가.

가
2002 3/4



1997 IMF

가

– 1997 2001 1/4

— 2001 2/4

– 3/4

가

가 5% , 가

10%

가 (: %)				가 (: %)			
1998	-21.5	-22.2	-21.8	1998	-28.1	-27.2	-26.8
1999	14.9	7.5	-4.8	1999	33.4	27.2	13.9
2000	3.8	0.6	2.5	2000	14.2	11.4	13.3
2001	9.0	8.0	7.0	2001	15.0	14.0	15.0
2002	6.0	5.0	4.0	2002	10.0	9.0	9.0

– 2001

가

2002

가

가 10

가 2002

가

가 9

가

가

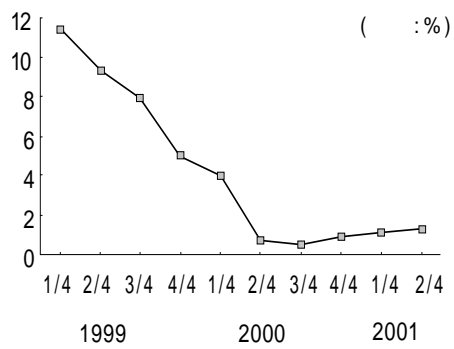
가

-
- , 2002
가 .
가 .
가
3/4 .
- 60%
가 . 가
가 가 .
가 가 . 2002
가 .
- 1998 2 3 가
2002 .
- 가
50% .
가 .
- ,
가 . , 가 ,
가 ,
가 .

3. 2002

(1) 2001

1)



	1999				2000				2001	
	1/4	2/4	3/4	4/4	1/4	2/4	3/4	4/4	1/4	2/4
A	9.4	8.8	7.9	5.0	5.1	0.8	0.4	0.6	1.2	1.4
B	11.1	7.7	7.0	4.9	3.2	0.4	0.5	0.8	0.9	0.9
C	13.7	11.0	8.6	5.0	3.8	0.9	0.6	1.3	1.1	1.4
	11.4	9.3	7.9	5.0	4.0	0.7	0.5	0.9	1.1	1.3

: R2Korea.

— 2001 2/4 1.3%

(2 3%)

.

1999 1/4 11.4%

· 1999 2/4

1999 5%

2000

2/4 1%

(0.7%)

· 2000 2/4

2000 4/4

2)

– 2001 2/4 1999 1/4

15.9% 341 .

· 1999 1/4 294

(2.5 ~ 3.5%)

1999 4/4 .

· ,

0.7% 2000 2/4 20%

·

· 2000 3/4

(: /)

	1999				2000				2001	
	1/4	2/4	3/4	4/4	1/4	2/4	3/4	4/4	1/4	2/4
A	3,589	3,552	3,487	3,502	3,830	4,507	4,816	4,442	4,543	4,584
B	2,760	2,713	2,704	2,819	2,991	3,723	3,699	3,670	3,796	3,569
C	2,228	2,075	2,104	2,178	2,288	2,886	2,723	2,591	2,649	2,714
	2,939	2,877	2,871	2,846	3,101	3,735	3,704	3,454	3,479	3,407

: R2Korea.

3)

— 2001 2/4 50 7,000 , 5 1,000

. 2000 1/4 가

가 2000 2/4 ,

.

.

,

.

()

(: /)

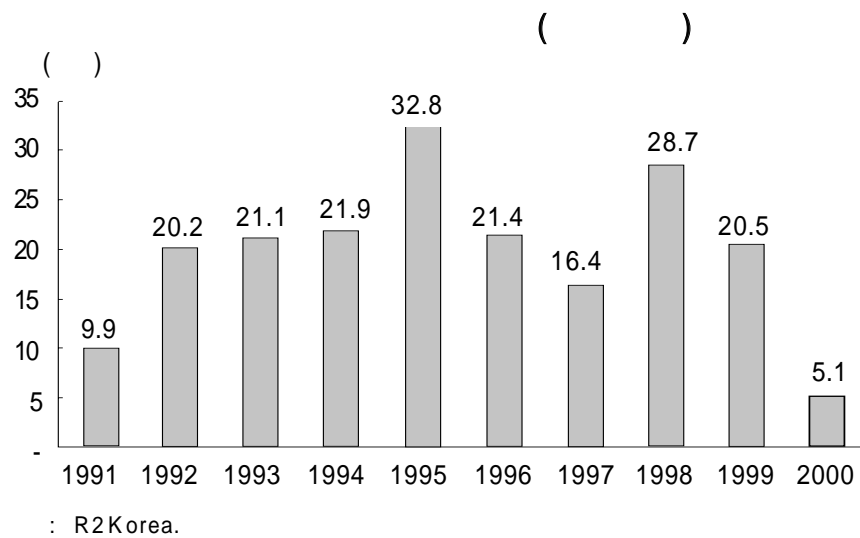
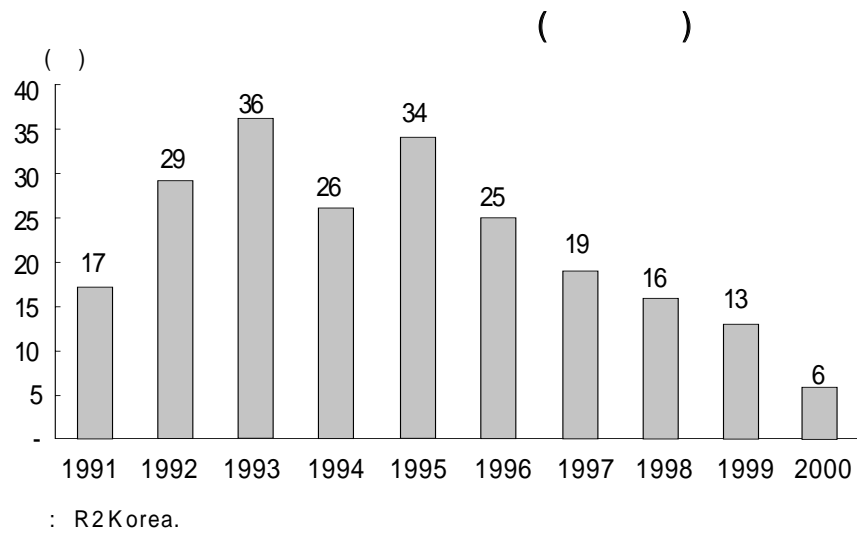
		1999				2000				2001	
		1/4	2/4	3/4	4/4	1/4	2/4	3/4	4/4	1/4	2/4
A		560.4	554.9	554.0	538.9	540.3	556.2	569.6	572.6	602.7	585.1
		59.2	57.0	57.4	55.8	55.7	60.1	60.4	61.9	63.1	60.9
B		368.1	365.3	359.2	363.0	359.0	382.4	385.8	391.9	391.9	424.2
		36.4	36.3	35.7	36.1	35.3	37.9	38.7	39.1	39.5	41.0
C		294.7	304.1	317.7	344.1	318.8	362.3	362.3	356.4	349.6	367.7
		29.2	30.2	30.8	31.1	31.1	35.8	35.8	35.5	34.8	34.7
		492.2	487.2	483.0	475.0	460.4	488.2	495.8	498.0	509.9	507.3
		51.2	49.7	49.5	48.4	46.7	51.5	51.6	52.6	52.7	51.4

: R2Korea.

(2) 2002

1)

– 1990 가 11 1997
 .
 . 1991 96 28 1997 50 %
 .
 . 2000 6 .



— 1998 1999 가 ,
4

LG .

— 2002 2003 23

3,000 .

. 2002 . 2003

2 5,000 .

. 2002

(:)

	2001	2002	2003
	104,584	123,062	23,196
/	39,173	23,796	1,960
/	16,445	59,128	0
	1,162	0	0
	161,364	205,986	25,156

— 가 ,

.

— 1999 ,

.

. 8 , 1997 3.4

1998 2.6 , 1999

.

.

, 가

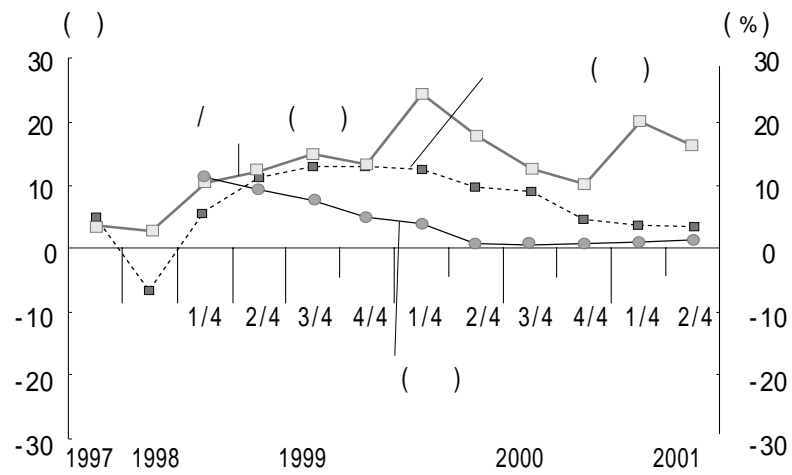
.

가

2002

가

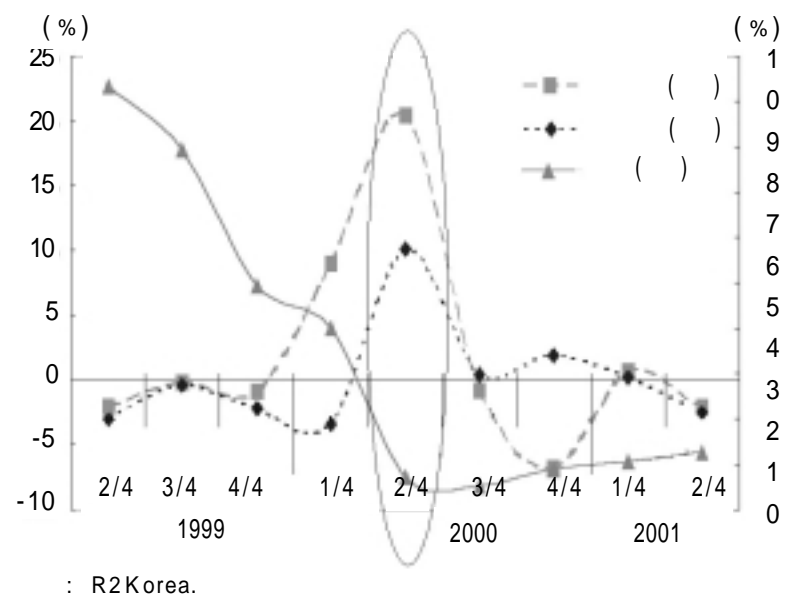
GDP



: R2Korea ;

2) 2002

1999 4/4 2000 1/4
1% 1 1 가
가



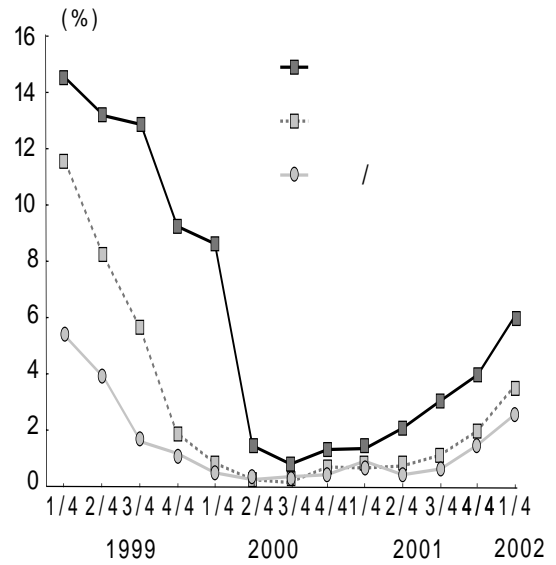
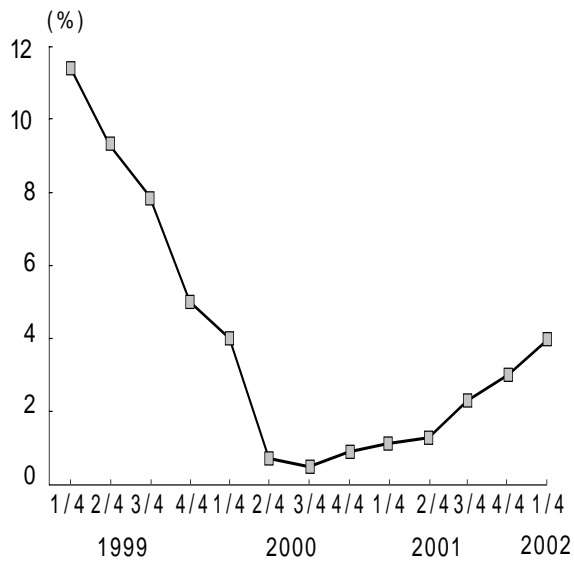
2002 4.0%
가
2001 4.0% 2002 6.0%
2001 2.0%
가 2002 3.5%

· /

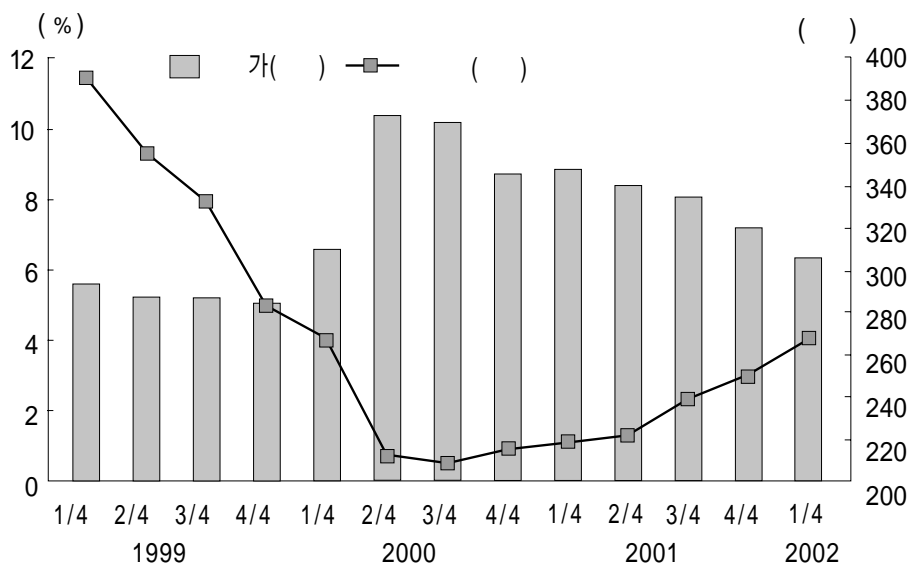
2001 1.5 %

2002 /

2.5 %



(가)



: R2Korea ;

— 2002 가 2003
 .
 . () 2/4 341 /
 4/4 320 / , 2002 305 .
 . 가 가
 .